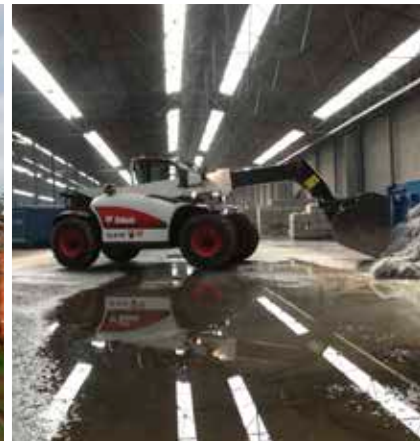




# Bobcat®

## PRODUCT RANGE TELESCOPIC HANDLERS



***One Tough Animal™***



# Bobcat®



**T2250**

**TL358  
TL358+**

**TL360**

## MAIN FEATURES

Stabilisers		no	no	no
Frame Leveling		no	no	no
Boom positioning		no	no	no

## PERFORMANCE

		Bob-Tach™/Quick-Tach		
Maximum lift capacity	kg	2200	2600 - 3000	3000
Maximum lift height (on stabilisers when equipped)	mm	5250	5890	6010
Maximum forward reach	mm	3010	3010	3365
Lift capacity at full height (on stabilisers when equipped)	kg	2200	2000 - 2500	3000
Lift capacity at full reach (on stabilisers when equipped)	kg	1000	1000 - 1300	1300
Crowding force	daN	2100	4600	5700

## WEIGHTS

Weight (unladen)	kg	4695	4900 - 5300	6110
------------------	----	------	-------------	------

## ENGINE

		KUBOTA V3800-DI turbo	DEUTZ * TCD 3.6 L4	DEUTZ * TCD 3.6 L4
Make / Model				
Fuel / Cooling		Diesel / Liquid	Diesel / Liquid	Diesel / Liquid
Emissions		Stage IIIA	Stage IIIB	Stage IIIB
Rated power (ISO TR 14396)	kW (HP)	56 (75) at 2400 rpm	74.5 (100) at 2300 rpm	74.5 (100) at 2300 rpm
Maximum torque at 1600 rpm	Nm	274	410	410
Number of cylinders		4	4	4
Displacement	l	3.8	3.6	3.6

## TRACTION

Standard tyres		14x17.5	405/70-20	405/70-20
Low speed	km/h	0-7	0-10	0-11
High speed (option)	km/h	0-25	0-30 (40)	0-30 (40)

## DRIVE SYSTEM

Transmission		Hydrostatic with electronic regulation	Hydrostatic with electronic regulation	Hydrostatic with electronic regulation
Main drive		Hydrostatic motor	Hydrostatic motor	Hydrostatic motor + 2 speed gearbox

## HYDRAULIC SYSTEM

Pump type		Gear pump with LS valve	Gear pump with LS valve	Gear pump with LS valve
Distributor		Flow sharing	Flow sharing	Flow sharing
Combined pump capacity	l/min	85	100	100
Working pressure	bar	240	250	255

## BRAKES

Service brake		Oil-immersed disc	Oil immersed disc	Oil immersed disc
Parking and emergency brake		Negative brake with hydraulic command	Negative brake with hydraulic command	Negative brake with hydraulic command

## DIMENSIONS

Overall width	mm	1840	2100	2300
Overall length (without attachment)	mm	3984 / 4000	4400	4563
Overall height	mm	1985(17.5")	Low Cab: 2100(20") / 2184(24") High Cab: 2250(20") / 2334(24")	2290(20") / 2374(24")
Ground clearance	mm	294	264(20") / 348(24")	346(20") / 430(24")
Wheelbase	mm	2300	2820	2870
External turning radius (at tyres)	mm	3170	3717(20") / 3875(24")	3714
Internal turning radius	mm	1500	1329(20") / 1503(24")	1092

\* Also available with Perkins 1104D-44TA Stage IIIA/Tier3 engine for lesser regulated countries



<b>TL470</b>	<b>TL470HF</b>	<b>T35105 T35105L</b>	<b>T36120SL</b>	<b>T35130S T35130SL</b>	<b>T35140S</b>	<b>T40140</b>	<b>T40180</b>
--------------	----------------	---------------------------	-----------------	-----------------------------	----------------	---------------	---------------

no	no	no	yes	yes	yes	yes	yes
no	no	no - yes	yes	no - yes	no	yes	yes
no	no	no	no	no - yes	no	yes	yes

3500	3500	3500	3600	3500	3500	4100	4000
6957	6957	10375	11871	12552	13656	13656	17466
4002	4002	6795	8107	8690	9449	9449	12800
3000	3000	600 - 2500	3200	3500	3500	4100	2500
1500	1500	600	1200	1300	1000	1250	560
6200	6200	7800	7800	12300	12300	12300	12300

7130	7130	7420	8350	8720 - 8830	9200	10290	10790
------	------	------	------	-------------	------	-------	-------

DEUTZ * TCD 3.6 L4	DEUTZ * TCD 3.6 L4	DEUTZ * TCD 3.6 L4	DEUTZ * TCD 3.6 L4	DEUTZ * TCD 3.6 L4	DEUTZ * TCD 3.6 L4	DEUTZ * TCD 3.6 L4	DEUTZ * TCD 3.6 L4
Diesel / Liquid	Diesel / Liquid	Diesel / Liquid	Diesel / Liquid	Diesel / Liquid	Diesel / Liquid	Diesel / Liquid	Diesel / Liquid
Stage IIIB	Stage IIIB	Stage IIIB	Stage IIIB	Stage IIIB	Stage IIIB	Stage IIIB	Stage IIIB
74.5 (100) at 2300 rpm	89.5 (122) at 2300 rpm	74.5 (100) at 2300 rpm	74.5 (100) at 2300 rpm	74.5 (100) at 2300 rpm	74.5 (100) at 2300 rpm	74.5 (100) at 2300 rpm	74.5 (100) at 2300 rpm
410	480	410	410	410	410	410	410
4	4	4	4	4	4	4	4
3.6	3.6	3.6	3.6	3.6	3.6	3.6	3.6

405/70-20	405/70-20	405/70-20	405/70-20	405/70-20	400/80-24	400/80-24	400/80-24
0-11	0-11	0-8,5	0-8,5	0-8,5	0-8,5	0-8,5	0-8,5
0-30 (40)	0-30 (40)	0-30	0-30	0-30	0-30	0-30	0-30

Hydrostatic with electronic regulation	Hydrostatic with electronic regulation	Hydrostatic with electronic regulation	Hydrostatic with electronic regulation	Hydrostatic with electronic regulation	Hydrostatic with electronic regulation	Hydrostatic with electronic regulation	Hydrostatic with electronic regulation
Hydrostatic motor + 2 speed gearbox	Hydrostatic motor + 2 speed gearbox	Hydrostatic motor	Hydrostatic motor	Hydrostatic motor	Hydrostatic motor	Hydrostatic motor	Hydrostatic motor

Gear pump with LS valve	Load sensing pump	Gear pump with LS valve	Gear pump with LS valve	Gear pump with LS valve	Gear pump with LS valve	Gear pump with LS valve	Gear pump with LS valve
Flow sharing	Flow sharing	Electro-proportional	Electro-proportional	Electro-proportional	Electro-proportional	Electro-proportional	Electro-proportional
100	190	100	100	100	100	100	100
255	255	255	255	255	255	255	255

Oil immersed disc	Oil immersed disc	Oil-immersed disc	Oil-immersed disc	Oil-immersed disc	Oil-immersed disc	Oil-immersed disc	Oil-immersed disc
Negative brake with hydraulic command	Negative brake with hydraulic command	Negative brake with hydraulic command	Negative brake with hydraulic command	Negative brake with hydraulic command	Negative brake with hydraulic command	Negative brake with hydraulic command	Negative brake with hydraulic command

2300	2300	2264	2264	2418	2418	2418	2418
4763	4763	4936	5287	5820	6052	6052	6164
2290(20") / 2374(24")	2290(20") / 2374(24")	2389(20") / 2474(24")	2389(20") / 2474(24")	2393(20") / 2480(24")	2480	2476	2476
346(20") / 430(24")	346(20") / 430(24")	415(20") / 500(24")	415(20") / 500(24")	422(20") / 509(24")	509	509	509
2870	2870	2850	2850	2850	2850	2850	2850
3714	3714	3765	3765	4150	4150	4150	4150
1092	1092	1245	1245	1519	1519	1519	1519



# OPTIONS AND ATTACHMENTS

	T2250	TL358 TL358+	TL360	TL470	TL470HF	T35105 T35105L	T36120SL	T35130S T35130SL	T35140S	T40140	T40180
<b>OPTIONS</b>											
Carriage	QT, BT	QT, M	QT, M	QT, M	QT, M	QT	QT	QT, M	QT, M	QT, M	QT, M
2nd auxiliary hydraulic line on boom	X									X	X
Boom wiring harness and electric connectors		X	X	X	X	X	X	X	X	X	X
40 km/h travel speed		X	X	X	X						
Air conditioning	X	X	X	X	X	X	X	X	X	X	X
Air suspension seat		X	X	X	X	X	X	X	X	X	X
Back-up alarm	X	X	X	X	X	X	X	X	X	X	X
Boom light	X	X	X	X	X	X	X	X	X	X	X
Boom suspension		X	X	X	X						
Carriage with hydraulic locking	X	X	X	X	X	X	X	X	X	X	X
Cold weather start		X	X	X	Std	X	X	X	X	X	X
Cyclonic air prefilter		X	X	X	X	X	X	X	X	X	X
Fan inverter		X	X	X	X	X	X	X	X	X	X
Lockable fuel cap	X	X	X	X	X	X	X	X	X	X	X
Loudspeaker ready	X	X	X	X	X	X	X	X	X	X	X
Man platform predisposition										X	X
Multifunction remote control						X	X	X	X	X	X
Rear hydraulic auxiliary	X	X	X	X	X					X	X
Rear mirror	X	X	X	X	X	X	X	X	X	X	X
Roof window wiper	X	X	X	X	X	X	X	X	X	X	X
Rotating flashing beacon	X	X	X	X	X	X	X	X	X	X	X
Set of blue lights for henhouses	X	X	X	X	X						
Support for vehicle registration plate	X	X	X	X	X	X	X	X	X	X	X
Tool box			X	X	X						
Tow hitches	X	X	X	X	X	X	X	X	X	X	X
Tractor homologation			X	X	X						
Trailer brake valve	X	X	X	X	X						
Tyres 24" (400)		X	X	X	X	X	X	X	Std	Std	Std
Tyres 24" (460)			X	X	X						
Tyres 24" (500)			X	X	X						
<b>ATTACHMENTS</b>											
Angle broom	BT										
Auger	QT										
Bale fork	QT, BT	QT, M	QT, M	QT, M	QT, M						
Bale squeeze handler with tines	QT	QT, M	QT, M	QT, M	QT, M						
Bale squeeze handler with tubes	QT	QT, M	QT, M	QT, M	QT, M						
Box blade	BT										
Brushcat™ rotary cutter	BT										
Bucket with grapple	QT, BT	QT, M	QT, M	QT, M	QT, M						
Bucket, combination	QT, BT										
Bucket, digging and loading	QT, BT	QT, M	QT, M	QT, M	QT, M					QT	QT
Bucket, large capacity	QT, BT	QT, M	QT, M	QT, M	QT, M						
Bucket, snow	BT										
Concrete bucket										FM	FM
Crane jib		QT	QT, M		QT, M	QT	QT	QT	QT	QT, M	QT, M
Dozer blade	BT										
Extension jib						QT	QT	QT	QT	QT	QT
Fork with grapple	QT, BT		QT, M	QT	QT						
Landplane	BT										
Landscape rake	BT										
Man platform 1 m/220 kg										QT	QT
Man platform 2.2 m/300 kg, rotating										QT	QT
Man platform 2.4-4 m/300 kg, rotating										QT	QT
Man platform 2.4-4 m/800 kg, rotating										QT	QT
Mixing bucket	QT, BT										
Mower	BT										
Pallet forks, fixed	QT, BT	QT, M	QT, M	QT	QT	QT	QT	QT, M	QT, M	QT, M	QT, M
Pallet forks, fixed, w/sideshift	QT, BT		QT, M	QT	QT					QT, M	QT, M
Pallet forks, floating	QT	QT, M	QT, M	QT, M	QT, M	QT	QT	QT, M	QT, M	QT, M	QT, M
Scraper	BT										
Snow V-blade	BT										
Snow blade	BT										
Snowblower	BT										
Sweeper	BT										
Sweeper, industrial			FM	FM	FM						
Tiller	BT										
Trencher	BT										
Vibratory roller	BT										
Hydraulic hoisting winch										QT	QT
Hydraulic hoisting winch extension										QT	QT

BT: Bob-Tach™ - QT: Quick-Tach - M: Manitou carriage compatible - FM: Fork mounted



[www.bobcat.eu](http://www.bobcat.eu)

